

## BDU-X10S Firmware Update

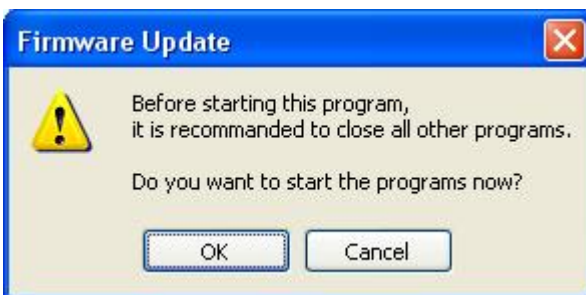
---

Download the BDU-X10S firmware updater to your hard disk, unzip the file, and then perform the procedure below.

### Important Note:

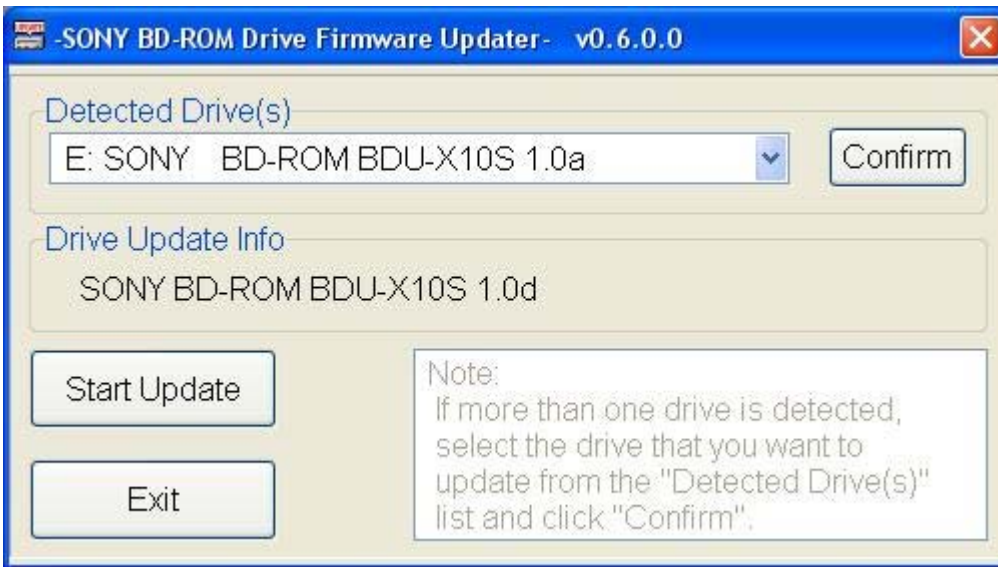
- When using Windows Vista or Windows XP, **log on to Windows as the computer administrator or as a user with administrator access privileges.**

- 1** Connect the BDU-X10S to your computer. Confirm that the drive is detected correctly by your computer.
- 2** If a disc is loaded in the drive, remove it.
- 3** Double-click the executable file "**BDUX10S\_10d.exe**".
- 4** Close all other programs and Click [OK] to continue.



**5**

Please choose the correct drive and select [Start Update] to continue.



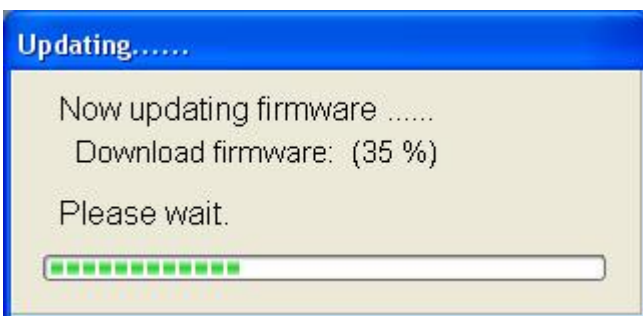
- 6 Please confirm if you want to update by selecting "OK." Please note that the computer will be restarted after the firmware update has been finished.



**Note:**

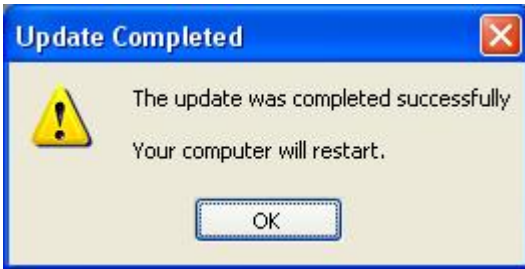
Do not turn off the power of the drive or your computer during the firmware update. Further, do not handle the drive or interface cable, or touch your keyboard as it may cause the update to fail or make the drive unusable.

- 7 The drive indicator becomes blue and the update begins.



The update is now completed, click [OK] to restart your computer.

8



\*Windows is a registered trademark of Microsoft Corporation in the United States and/or other countries. Other company and product names are registered trademarks or trademarks of their respective owners, although the TM and ® marks are not used in the text.<sup>2</sup>

© 2008 Sony Corporation. All rights reserved.